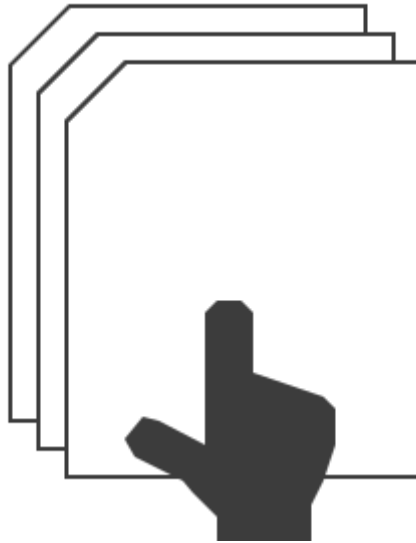


CT FileOperations

(version 1.0.4)



User Manual

Revision 2019/03/28

©2018-2019 Łukasz Kłonica

TABLE OF CONTENTS

TABLE OF CONTENTS	2
ABOUT CT FILEOPERATIONS	3
HOW TO USE IT	3
INSTALLATION	3
UNINSTALL	3
HOW TO ACTIVATE THE ADD-IN	3
AVAILABLE COMMANDS	5
OPEN CONTAINING FOLDER	5
COPY FOLDER PATH TO CLIPBOARD	5
COPY FILE PATH TO CLIPBOARD	5
CLONE FILE	5
CLONE AND OPEN FILE	5
CLONE AND REPLACE FILE	5
SETTINGS	6
ACCESS TO SETTINGS	6
AVAILABLE SETTINGS	6
COMMANDS	6
MENU LOCATION	6
CLONE WITH DRAWING	7
OTHER	8

ABOUT CT FILEOPERATIONS

Software is an add-in for *Autodesk® Inventor®* which creates an additional submenu in context menu (right-click menu) called *CT FileOperations*. In this submenu is available a few extra commands. At the moment there are 6 special operations. Each of them can be activated or deactivated in the settings.

HOW TO USE IT

All additional commands are executed from the context menu. The configuration takes place in the settings form, which is available in the ribbon as *FileOperations* button in the settings panel (*CT Tools Tab*).

INSTALLATION

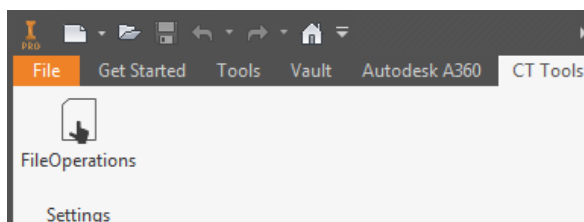
Double-clicking the installation file will start the program. *Windows®* will consider this a breach of security and will ask if you trust the software provider. If you want to use this extension, you will have to answer yes.

UNINSTALL

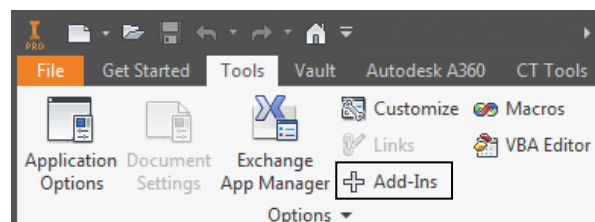
The uninstall procedure is the same as for other programs in *Windows®*. It depends on the version of operating system. However in most cases it's service "Programs and Features" in Control Panel.

HOW TO ACTIVATE THE ADD-IN

After installing the add-in, *Inventor®* should be re-opened. During opening *Inventor®* will ask if add-in should be block or not. Always there is possibility to block or unblock add-in manually. To do this simply go to the *Add-in Manager* in *Tools Tab* and check or uncheck *Load Behavior*.

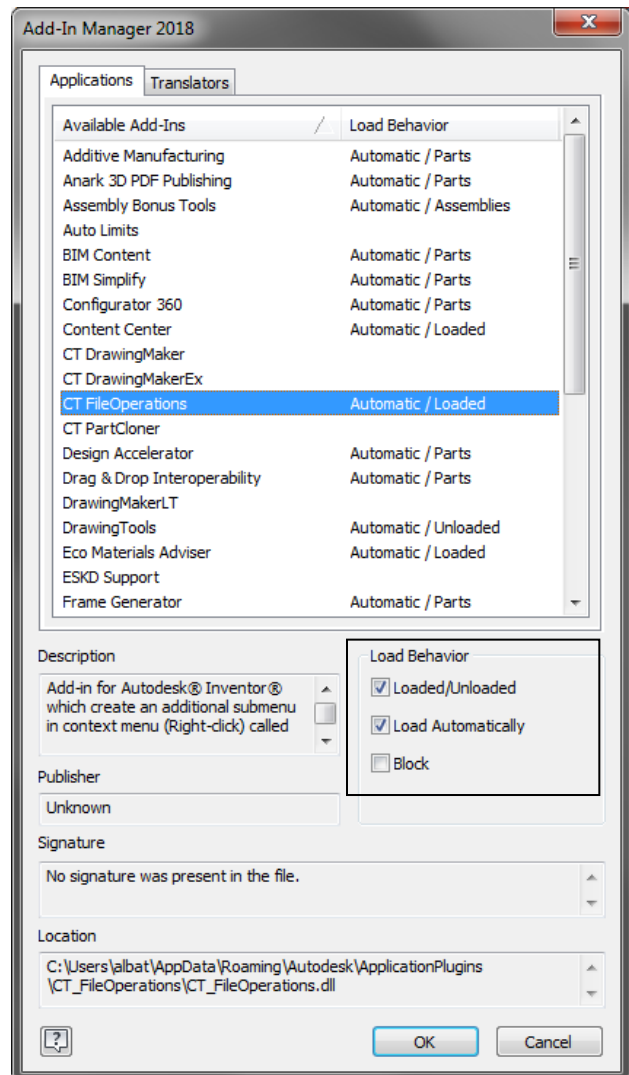
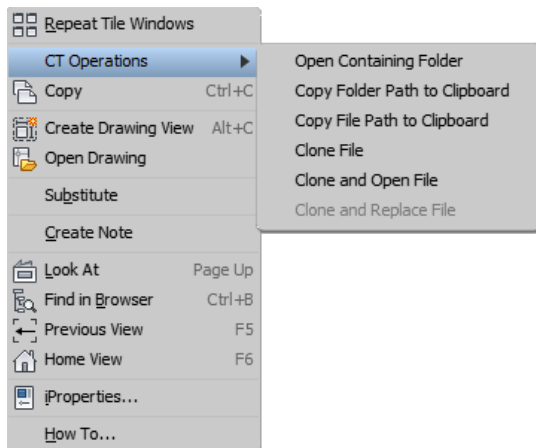


Correctly activated add-in.



Access to Add-In Manager

When add-in is active there should be an extra tab called *CT Tools* with new button *FileOperations*. To bring up a new submenu, just open context menu (right-click).



AVAILABLE COMMANDS

The commands can be used for both single and multiple selection.

OPEN CONTAINING FOLDER

Opens the folder where the file is saved. In the case when file is not saved to disk, nothing will happen.

COPY FOLDER PATH TO CLIPBOARD

Copies path of current selected file to clipboard without filename.

COPY FILE PATH TO CLIPBOARD

Copies path of current selected file to clipboard with filename and extension.

CLONE FILE

Saves a file as new copy in the same folder as source file. The filename is entered by the user. If the "*Clone with drawing*" option is selected in the settings and there is a drawing for the file, the extension copies this drawing and replaces the references inside this drawing.

CLONE AND OPEN FILE

The same option as above but this time cloned file will be opened in *Inventor®*.

CLONE AND REPLACE FILE

The option will clone the file and replace original with cloned in the assembly. **This command is available only when Assembly document is an active document and work only for components (assemblies and parts) in first level.** In others cases command will be disabled.

SETTINGS

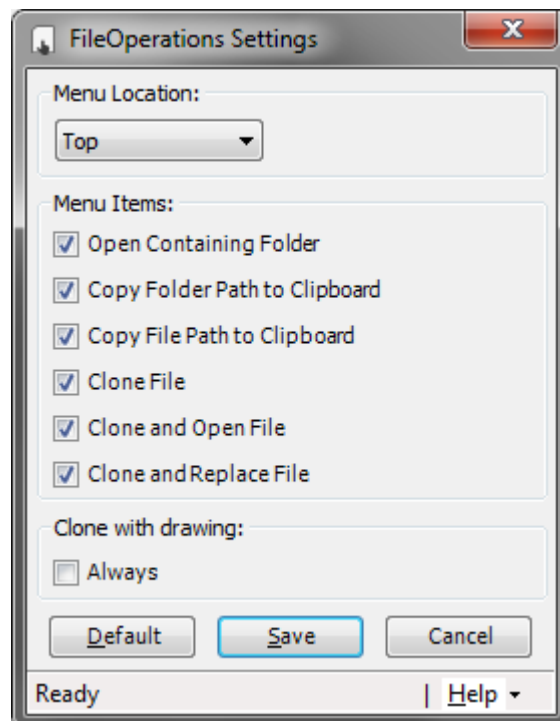
ACCESS TO SETTINGS

To open the settings, click on the icon *FileOperations* in *CT Tools* Tab.

AVAILABLE SETTINGS

COMMANDS

Each command has a check box. Checked box will show command in the submenu. In situation when all will be unchecked, the submenu will not be displayed in the context menu.



MENU LOCATION

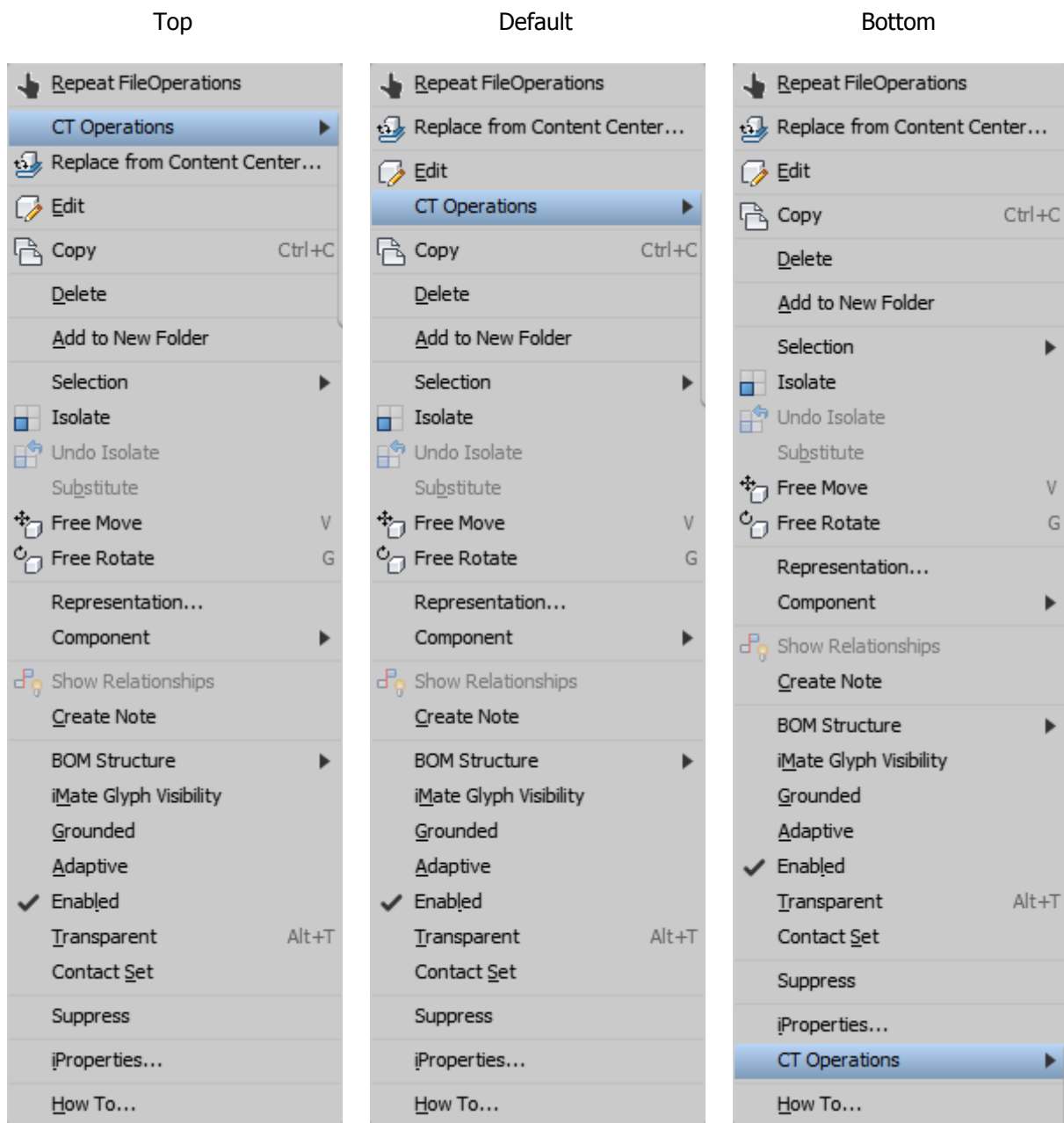
Allows you to select the location:

Top - Always on the top of context menu.

Default - Always above *copy* command.

Bottom - Always on the bottom of context menu.

Examples of different menu locations:



CLONE WITH DRAWING

This option determines whether the drawing will be copied during cloning. If yes, the reference in the new drawing will be replaced from old to new file.

OTHER

Default Button - Restores default settings: Menu location = Default and all commands are checked.

Save Button - Saves current settings and allows to keep them after re-open program.

Help - Runs additional menu where are information *About* add-in and access to *User manual*.

